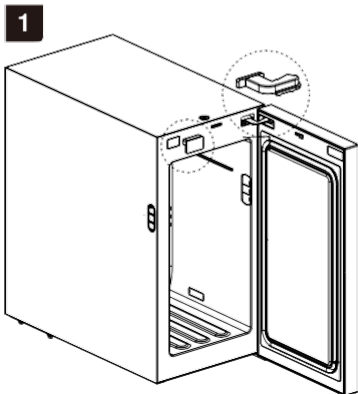


>>>>>> **Reversible Door Installation** <<<<<<<

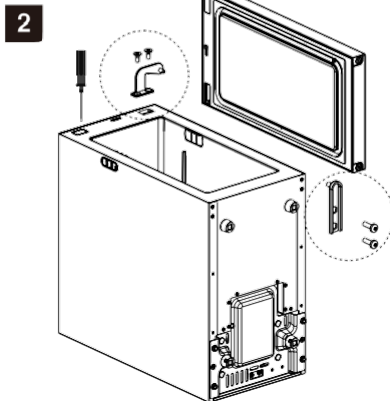
Procedure

MC13 D

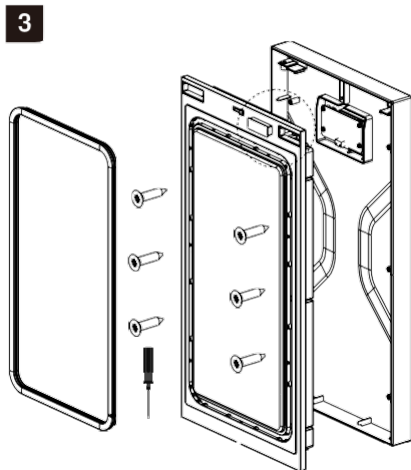
Steps of installation



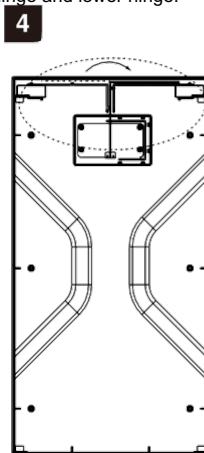
- (1) Remove the door hinge cap and the right hinge cover; (2) Disconnect the display connection cable.



- (1) Put the refrigerator as shown to prevent damage to the compressor, the time should not be too long.
- (2) Use a screwdriver to unscrew the M4x10 countersunk head screws, black galvanized (2 pcs) and M5x16 galvanized semi-circular head screws with toothed washer screws (2 pcs) and disassemble the upper right door hinge and lower hinge.



- (1) Remove the door gasket and hinge cap;
- (2) Use a screwdriver to remove the ST3.5x16 galvanized countersunk self-tapping screws (6 pcs) and remove the foam door assembly and door frame.



- (1) Place the door frame according to the drawing, remove the display wire from the socket and pass it to the right side.

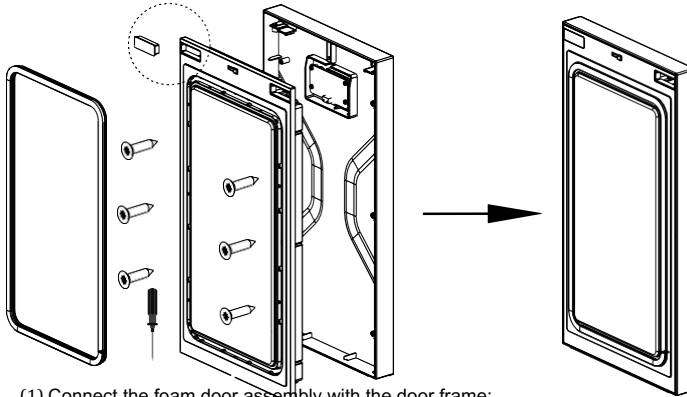
Reversible Door Installation Procedure MC13D

>>>>>

<<<<<

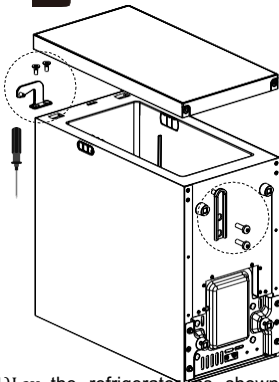
Steps of installation

5



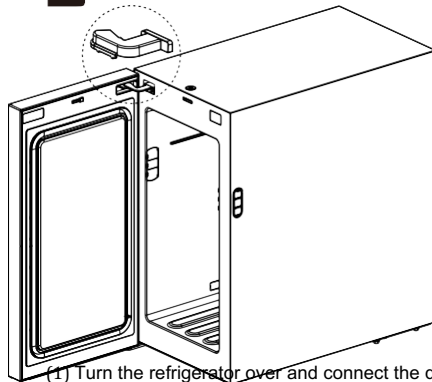
- (1) Connect the foam door assembly with the door frame;
- (2) Use a screwdriver to screw the galvanized ST3.5x16 countersunk self-tapping screws (6 pcs);
- (3) Install the top door hinge end cap on the left side of the foam door assembly (as shown);
- (4) Insert the door gasket.
- (5) The door is assembled.

6



- (1) Lay the refrigerator as shown to prevent damage to the compressor, the time should not be too long.
- (2) Match the hole of the upper door hinge with the door hinge and insert it;
- (3) Align the lower door hinge with the hole of the lower door hinge and insert it, then use galvanized semi-round head screws M5x16 with gear washers (2 pcs) and mount.

7



- (1) Turn the refrigerator over and connect the display wire to the case;
- (2) Remove the cover of the upper left door hinge from the accessory bag and secure the hinge as shown in the figure

REMARK:

Please put the removed parts back into the accessory bag for later use.